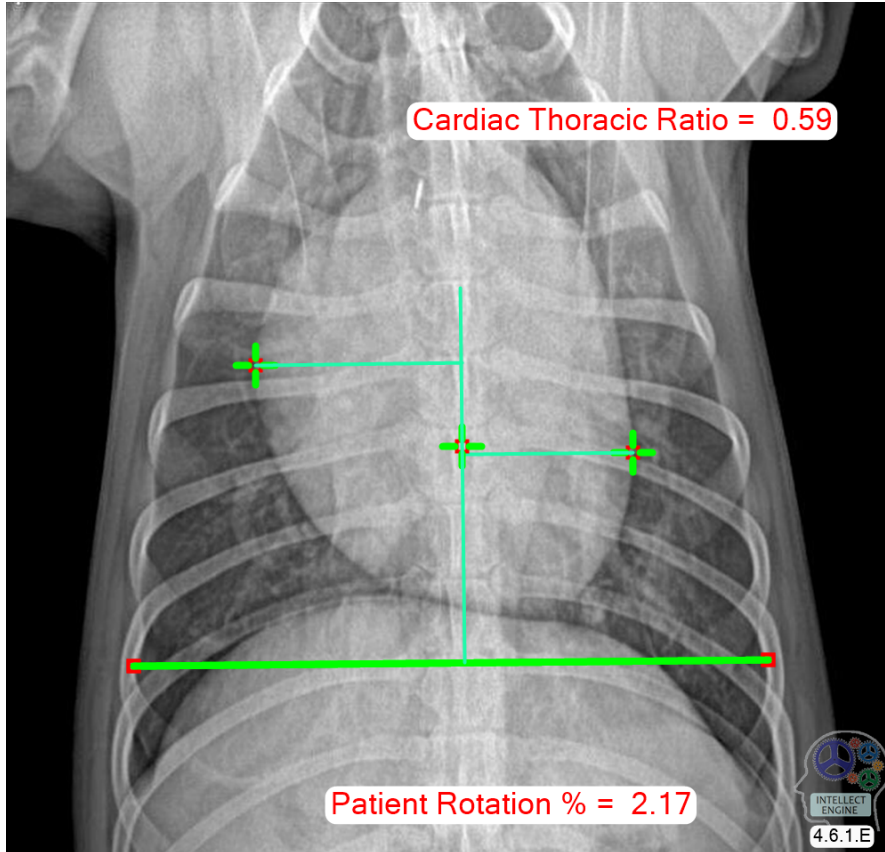




Cardiac Thoracic Ratio

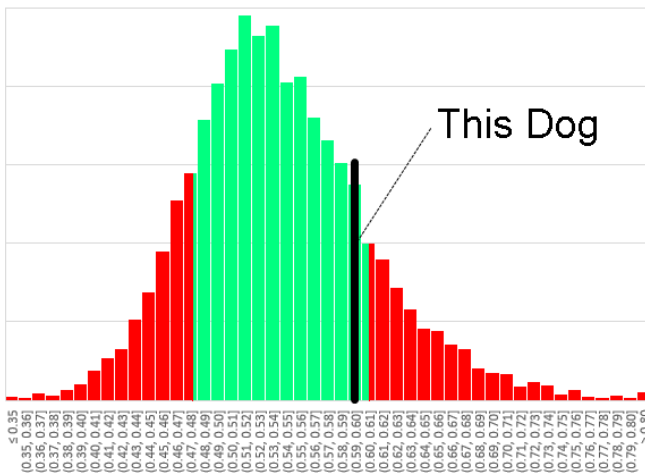
10:51:14

SampleOwner / SampleDog / 26-Mar-2024 / 6.9 Secs



The Cardiac Thoracic Ratio measurement is one way to help assess the size of the canine heart. It measures the size of the heart as a fraction of the width of the thorax at the 8-th rib. Use this result in combination with all relevant clinical information. Patient rotation less than 5% is best.

Cardiac Thoracic Ratio (CTR) for 14,231 Dogs



Distribution of 14,231 mixed breed dogs

The CTR measurement for this dog is 0.594. This value is indicated on the histogram to the left by the vertical black line. Large values might indicate cardiomegaly, small values might indicate microcardia.

The CTR is within the central 70% of dogs.

Reference: [Azevedo et al, 2016](#)

[Algorithm Details](#)