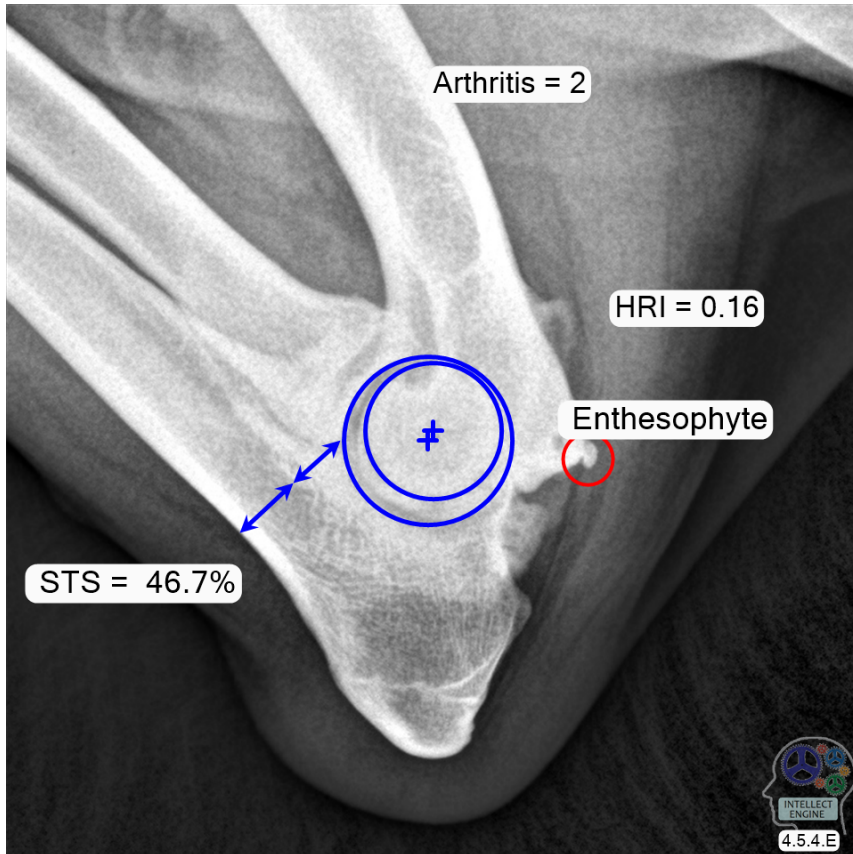




# Canine Elbow

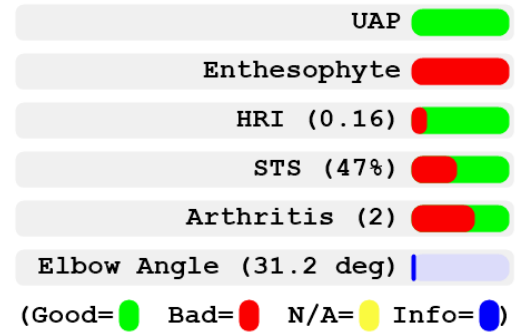
16:36:22

SampleOwner / SampleDog / 24-Mar-2023



Elbow Health Score: 60%

[Learn More](#)

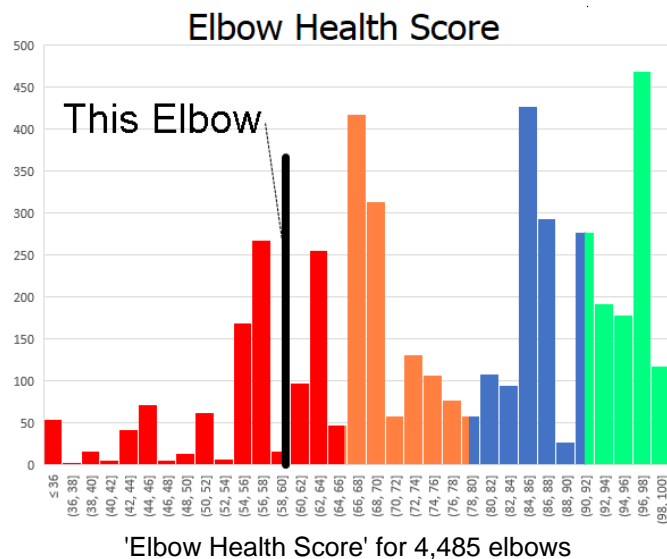


References for understanding these measures

HRI: [A. Mostafa et al., 2019](#)

STS: [T.J. Smith et al., 2009](#)

Several measurements have been made on this image. You can learn more about each of these measures by clicking on the blue links in this report. In order to give an overall numeric assessment, we have computed the 'Elbow Health Score' based on what is visible in this radiograph. This measure, serves as one data point for the veterinarian, to help monitor the pet's well-being.



The 'Elbow Health Score' for this elbow is 0%. This value is indicated on the histogram to the left by the vertical black line. The further to the right on this diagram, the better.

This elbow is in the 4th (worst) quartile.